

Phone: 66 2 286 0922
Fax: 66 2 287 4060
AFTN: VTBAYOYX
E-mail: aisthai@aviation.go.th

DEPARTMENT OF CIVIL AVIATION
Aeronautical Information Service
Tung Mahamek, Bangkok 10120
Thailand

AIRAC
AIP SUPPLEMENT

A4/16
17 March 2016

REVISION OF INSTRUMENT APPROACH CHART

VOR RWY 36 AND ILS OR LOC RWY 36 OF

CHIANG MAI INTERNATIONAL AIRPORT.

With effect from 28 April 2016, Instrument Approach Chart of Chiang Mai International Airport amount 2 charts will be established as shown on the attached charts .

This AIRAC AIP-Supplement cancel AIP-Thailand pages VTCC AD 2 - 39, Dated 5 MAR 15 and VTCC AD 2- 43, Dated 5 MAR 15.

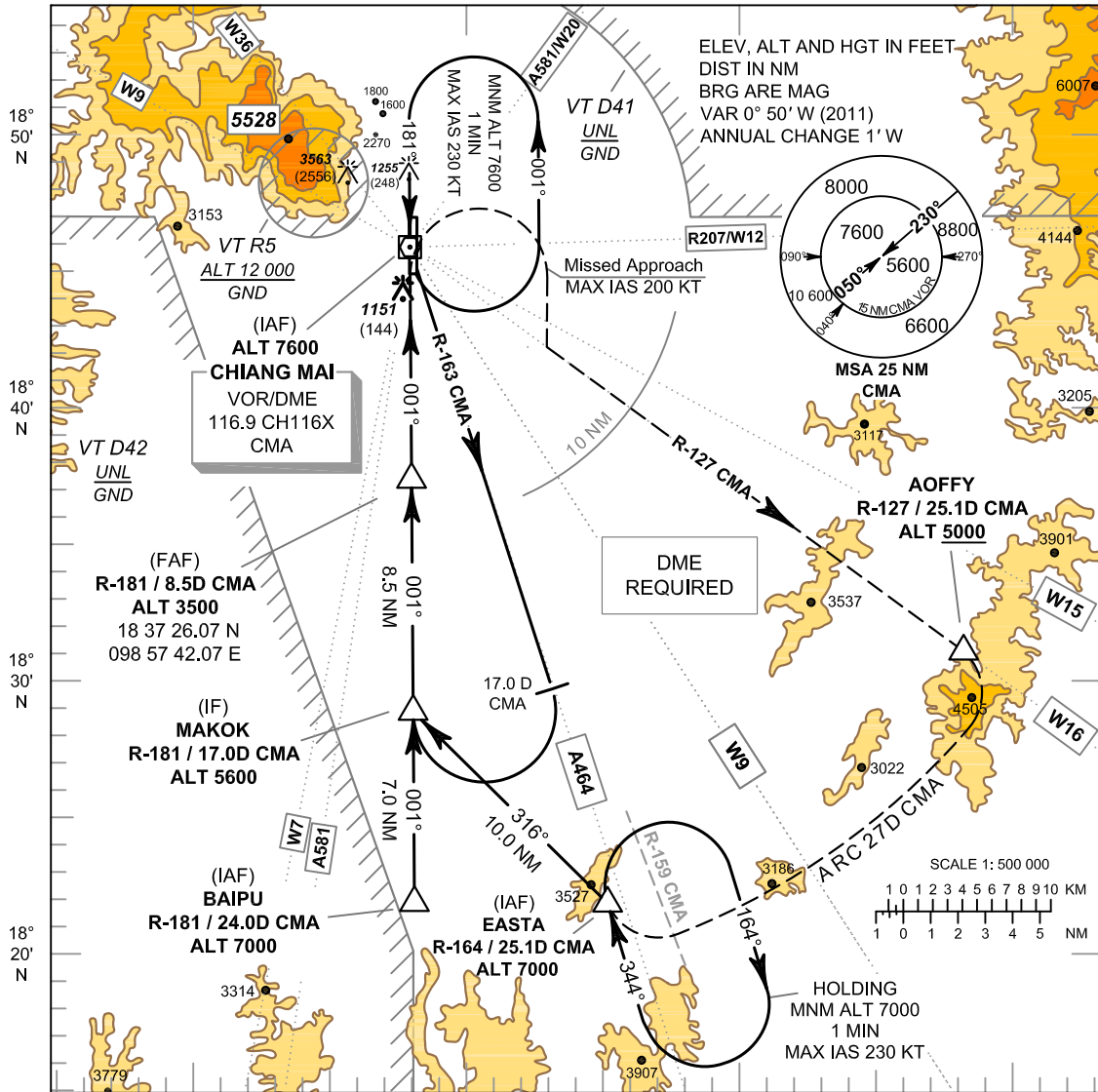
This AIRAC AIP-Supplement will remain current until its contents have been incorporated in AIP - Thailand.

INSTRUMENT APPROACH CHART - ICAO **AERODROME ELEV 1036 FT**
 HEIGHTS RELATED TO THR RWY 36 - ELEV 1007 FT

APP : 129.6 , 305.4
 TWR : 118.1 , 236.6
 GND : 121.9 , 275.8
 ATIS : 127.2 , 301.5

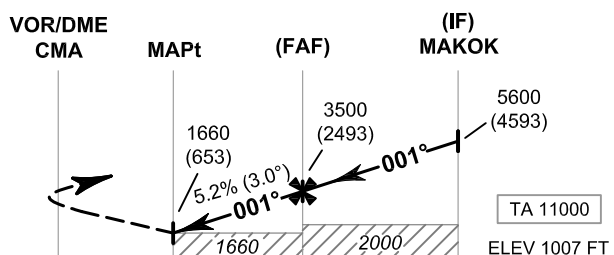
CHIANG MAI / Chiang Mai Intl (VTCC)

VOR RWY36



MISSED APPROACH :

No turn before MAPt.
 Speed restricted to MAX IAS 200 KT until after turn.
 Climb straight ahead to 1700 FT, then turn right to intercept outbound R-127 CMA VOR, proceed on R-127 to AOFFY follow ARC 27D CMA to EASTA at 7000 FT and hold or as directed by ATC.



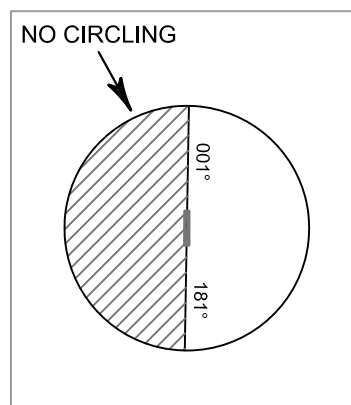
	NM	FM	THR 36										
				0	1.9	7.7	16.2						
	DME	FM	VOR/DME	0	0.8	2.7	8.5	17.0					

OCA/H	A	B	C	D	Distance (CMA)	2.7D	3D	4D	5D	6D	7D	8D	FAF
Straight - in Approach	1660 (653)				Altitude (Height)	1660 (653)	1750 (743)	2070 (1063)	2385 (1378)	2700 (1693)	3015 (2008)	3330 (2323)	3500 (2493)
	2220 (984) 2420 (1384)				Ground speed	knot	100	120	140	160	180	200	
*FOR CIRCLING RESTRICTIONS SEE VERSO					Rate of descent	(ft/min)	530	630	740	845	950	1055	

CHIANG MAI / Chiang Mai Intl (VTCC)

VOR RWY36

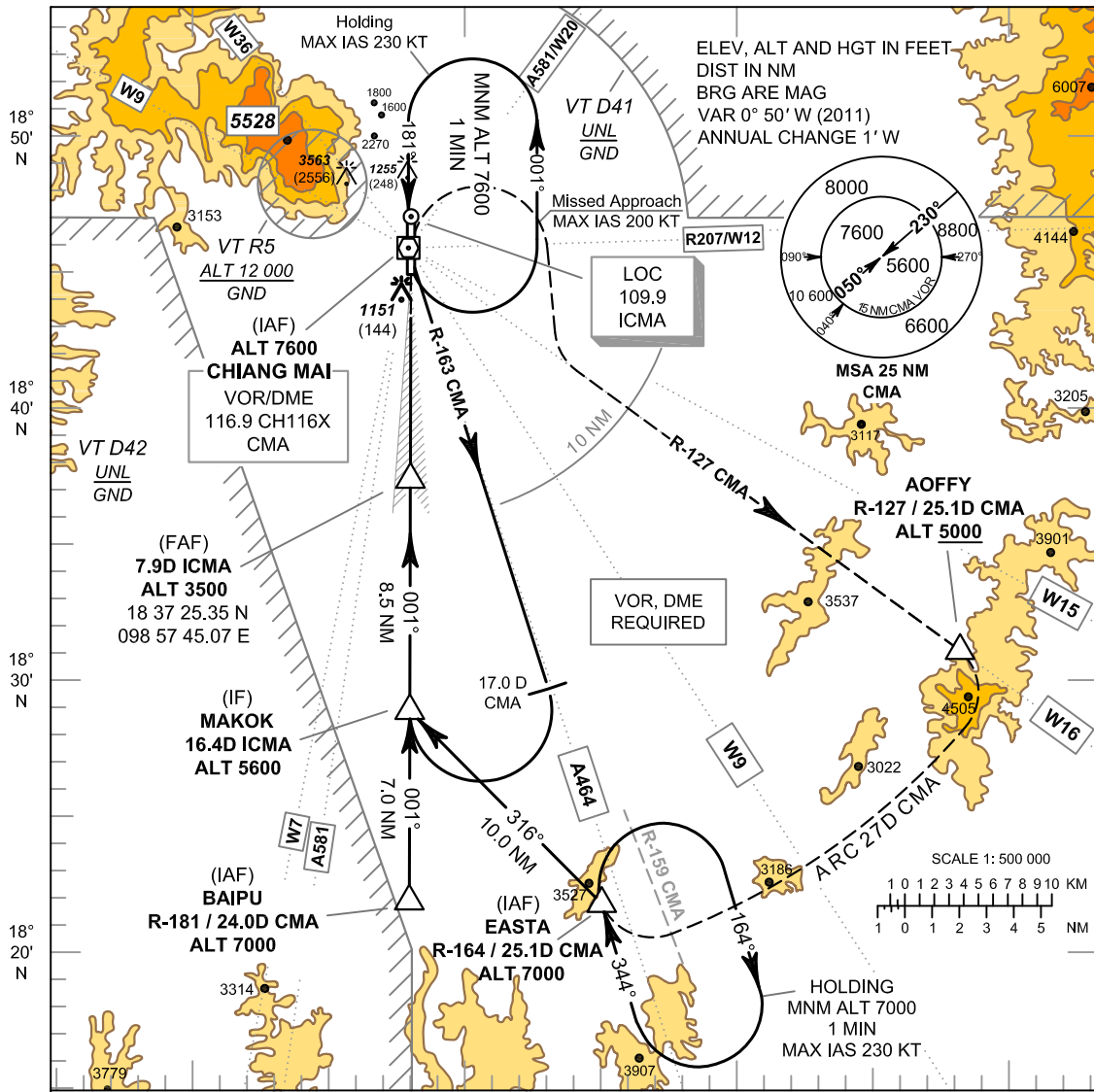
Fix / Point		Coordinates	
EASTA (IAF)	R-164 / 25.1 D CMA	18 21 45.87 N	099 05 08.92 E
BAIPU (IAF)	R-181 / 24.0 D CMA	18 21 51.34 N	098 57 42.68 E
MAKOK (IF)	R-181 / 17.0 D CMA	18 28 53.15 N	098 57 43.76 E
FAF	R-181 / 8.5 D CMA	18 37 26.07 N	098 57 42.07 E
MAPt	R-181 / 2.7 D CMA	18 43 15.43 N	098 57 40.92 E
THR RWY 36	-	18 45 10.95 N	098 57 46.26 E
VOR	CMA	18 45 58.06 N	098 57 40.38 E
AOFFY	R-127 / 25.1 D CMA	18 31 05.28 N	099 19 01.11 E



INSTRUMENT APPROACH CHART - ICAO
AERODROME ELEV 1036 FT
HEIGHTS RELATED TO THR RWY 36 - ELEV 1007 FT

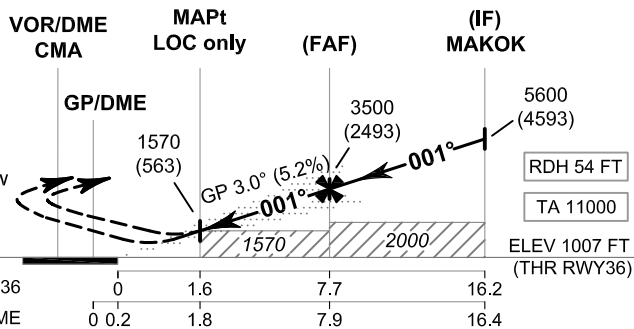
APP : 129.6 , 305.4
 TWR : 118.1 , 236.6
 GND : 121.9 , 275.8
 ATIS : 127.2 , 301.5

CHIANG MAI / Chiang Mai Intl (VTCC)
ILS or LOC RWY36



MISSED APPROACH :

No turn before MAPt (for LOC only).
 Speed restricted to
 MAX IAS 200 KT until after turn.
 Climb straight ahead to 1700 FT,
 then turn right to intercept outbound R-127
 CMA VOR, proceed on R-127 to AOFFY follow
 ARC 27D CMA to EASTA at 7000 FT
 and hold or as directed by ATC.



OCA/H		A	B	C	D	GS OUT	Distance (ICMA)	1.8D	3D	4D	5D	6D	7D	FAF
Straight - in Approach	CAT I	1390 (383)	1400 (393)	1410 (403)	1420 (413)		Altitude (Height)	1.8D	1570 (563)	1940 (933)	2260 (1253)	2575 (1568)	2890 (1883)	3205 (2198)
LOC only		1570 (563)				Ground speed	knot	100	120	140	160	180	200	
Circling* (OCH AAL)		2020 (984)		2220 (1184)	2420 (1384)	Rate of descent	(ft/min)	530	630	740	845	950	1055	

NOTE: OCA (OCH) : 1240 (233) FT of ILS procedure can be achieved for all aircraft categories which can commence a missed approach climb gradient of 4.0% (243 FT/NM) until after turn.

CHIANG MAI / Chiang Mai Intl (VTCC)

ILS or LOC RWY36

Fix / Point		Coordinates	
EASTA (IAF)	R-164 / 25.1 D CMA	18 21 45.87 N	099 05 08.92 E
BAIPU (IAF)	R-181 / 24.0 D CMA	18 21 51.34 N	098 57 42.68 E
MAKOK (IF)	16.4 D ICMA	18 28 53.15 N	098 57 43.76 E
FAF	7.9 D ICMA	18 37 25.35 N	098 57 45.07 E
MAPt (LOC only)	1.8 D ICMA	18 43 33.11 N	098 57 46.01 E
THR RWY 36	0.2 D ICMA	18 45 10.95 N	098 57 46.26 E
LOC	ICMA	18 47 07.42 N	098 57 46.56 E
AOFFY	R-127 / 25.1 D CMA	18 31 05.28 N	099 19 01.11 E

